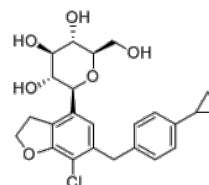


Product Name : DWP16001
Cat. No. : PC-72663
CAS No. : 1415472-28-4
Molecular Formula : C₂₄H₂₇ClO₆
Molecular Weight : 446.924
Target : SGLT
Solubility :



Biological Activity

DWP16001 (Enavogliflozin, GCC 5694A) is a potent and selective sodium glucose co-transporter 2 (**SGLT-2**) inhibitor with IC₅₀ of 0.46 nM (hSGLT2), > 700-fold selectivity against SGLT1.

GCC5694A exhibited activity comparable to that of dapagliflozin.

Oral administration of GCC5694A (0.1–1 mg/kg) increased urinary glucose excretion in a dose-dependent manner.

In STZ-induced type 1 diabetic rats and type 2 diabetic db/db mice, repeated administration of GCC5694A (0.05–0.5 mg/kg) for 5 weeks significantly reduced the levels of hemoglobin A1c (HbA1c) and blood glucose.

References

Young Kyu Kong, et al. Bioorg Med Chem Lett. 2022 Jan 15;56:128466.

Caution: Product has not been fully validated for medical applications. Lab Use Only!

E-mail: tech@probechem.com